

# The picture of Housing First in England

**Key findings from our *Understanding the models of Housing First in England* research**, which outlines current provision and explores variation in delivery of the approach. Based on a survey of 28 out of 32 active Housing First services providers,<sup>1</sup> July to September 2017.

# Our research found...



of the active services can support...



individuals at any one time between them<sup>2</sup>



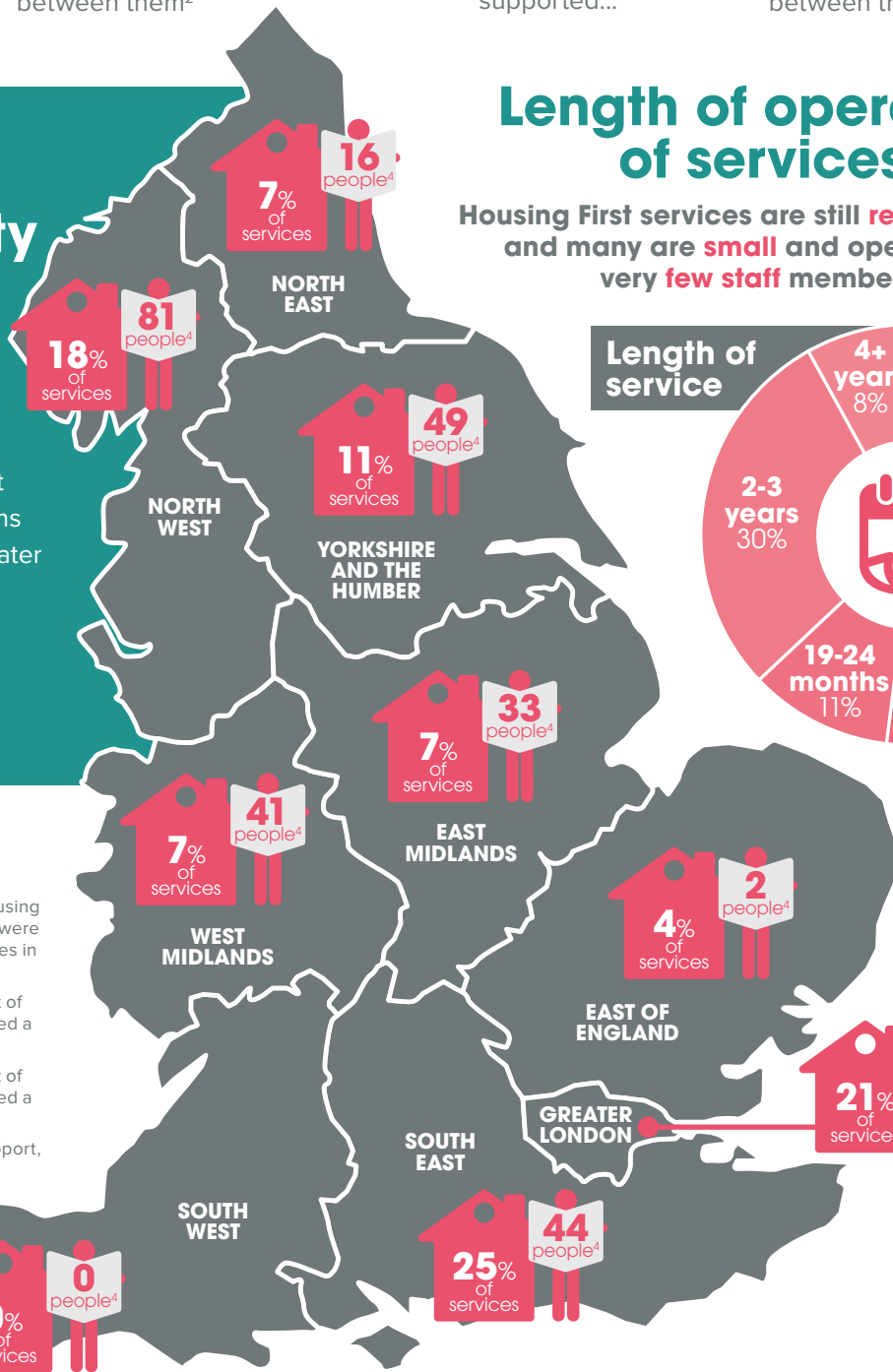
of the services have supported...



individuals to date between them<sup>3</sup>

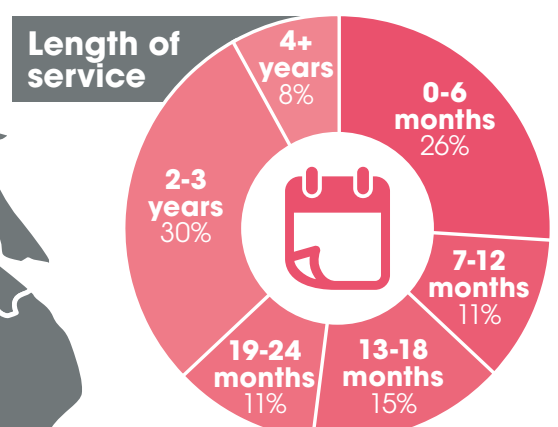
## Location and capacity of services by region

There is an uneven distribution of services across the country. It doesn't necessarily follow that regions with more services have greater capacity to provide support. Regions may have few large services or several small services.



## Length of operation of services

Housing First services are still **relatively new**, and many are **small** and operate with very **few staff members**.

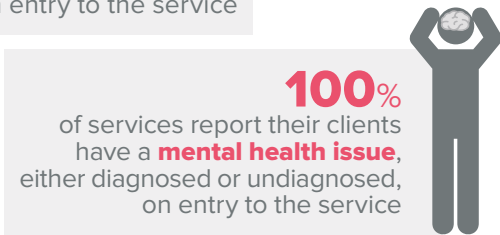
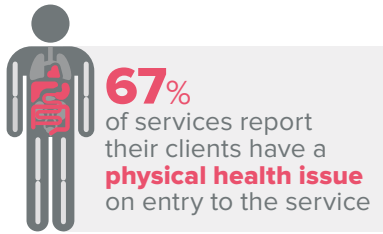


### Notes

1. Based on work conducted by the Housing First England team since 2016, there were 32 known active Housing First services in England at the time of fieldwork.
2. Medium estimate based on mid-point of responses to a question that presented a range. 26 services responded.
3. Medium estimate based on mid-point of responses to a question that presented a range. 25 services responded.
4. Number of individuals region can support, based on medium estimates.

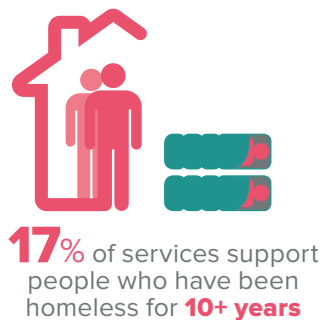
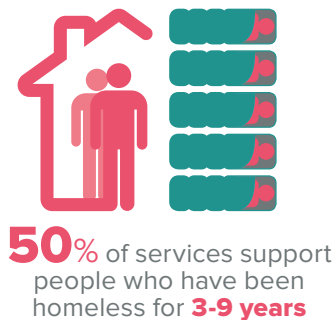
## Who services support

A high proportion of Housing First services in England say their clients experience **multiple disadvantage**.\*



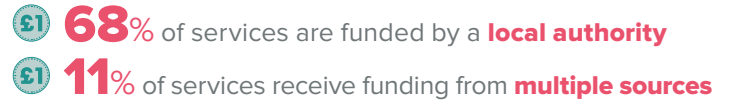
\* Proportion of services where 'most' or 'almost all' residents have a particular support need

Services house people who have experienced **homelessness for long periods** of time prior to accessing this support.



## How services are funded

The majority of services are funded, at least in part, by a **local authority**, although there is some evidence of **other funders supporting** the approach.

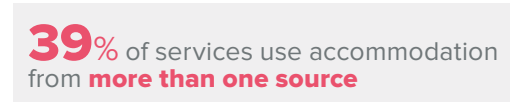
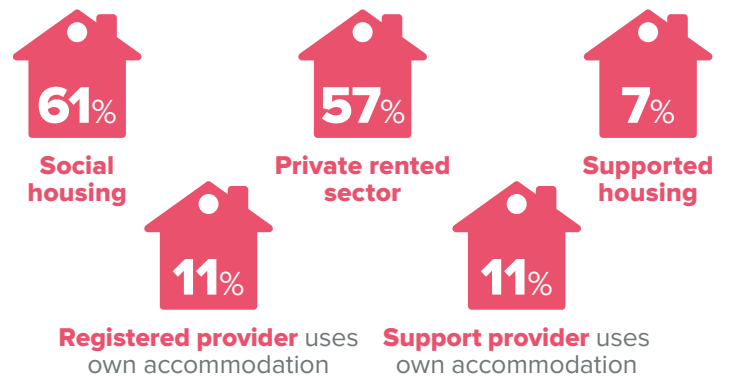


**Funding for many services is short-term**, and this continues to pose a challenge to an approach that commits to providing an open-ended offer of support for residents.

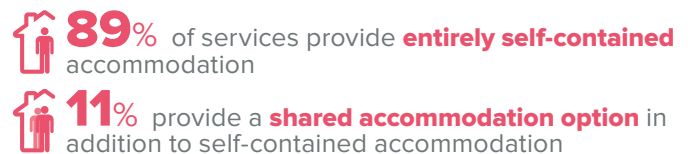


## The accommodation services use

Services draw on a **variety of sources** for accommodation and gain access to housing through a **variety of means**.



The **type of housing** provided to Housing First residents:





## What we do

Homeless Link is the national membership charity for frontline homelessness agencies and the wider housing with health, care and support sector. We work to improve services through research, training and guidance, and to promote policy change that will ensure everyone has a place to call home and the support they need to keep it.

# Let's end homelessness together

Homeless Link, Minories House, 2-5 Minories, London EC3N 1BJ

020 7840 4430

[www.homeless.org.uk](http://www.homeless.org.uk)  @Homelesslink  @homelesslink

**Housing First** England

**For more information:**

[www.hfe.homeless.org.uk](http://www.hfe.homeless.org.uk)

 @hf\_england